

Project profile...



Old Parliament House

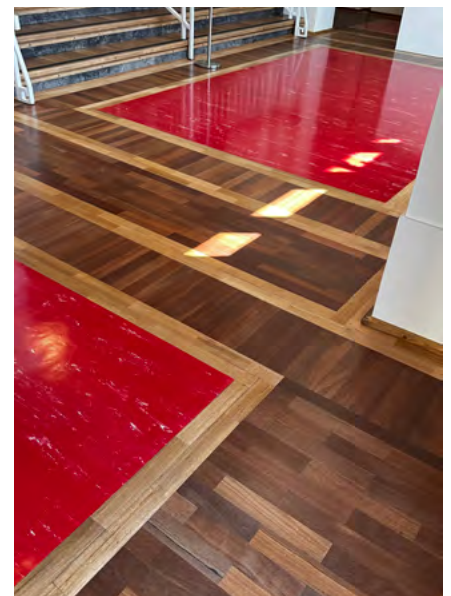
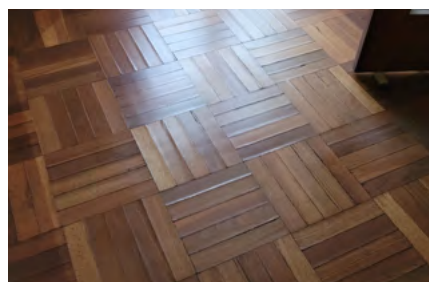
A fire in December 2021 left the flooring of the front foyer of Old Parliament House irretrievably damaged. Last sanded in 2011, the floor was a bespoke pattern of Jarrah parquet and Mountain Ash borders.

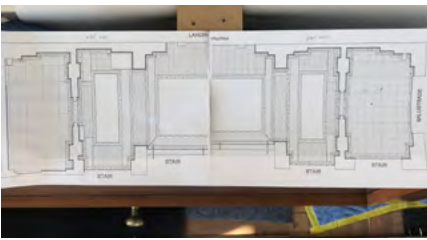
The brief from the Museum of Australian Democracy (Old Parliament House) was to recreate the foyer back to its original state, maintaining as much of the patina and character of the original floor as possible. This meant recycled boards, no nail holes and dimensions that matched the original installation.

We reached out to Geoff Logue and team at the Recycled Timber Company in Perth who were able to source recycled Jarrah boards from two old cottages in Nedlands and Rivervale. The Mountain Ash boards were sourced from Murphy's Salvage and Demolition in Albury.

The actual installation of the parquet was undertaken by the crew at Loader Contractors. The complex install required acute attention to detail and the guidance of Gillian Mitchell at Conservation Works was critical throughout the process. MoAD had arranged for every square metre of the entire area to be photographed and surveyed by Eric Martin & Associates so the installation could be exactly like for like.

continued »





An eagle-eyed observer may notice some anomalies. There are mitred joints in some areas and not others, boards of varying widths and lengths in random areas, and some border flows that seem anachronistic. While counterintuitive to installers of new floors, it was critical to recreating something that once was. The entire section was trowel glued with Soudal SMX 30+.

Preparation and sealing of the floor was undertaken by Refined Flooring and Old2New Timber Flooring. Traditionally, we would trowel fill parquet to provide greater stability and a mirror surface; however, it was decided to forgo the trowelling in a bid to help 'age' the area, as the original installation hadn't been trowelled either. The floor was sealed with Bona Traffic HD anti-slip as it is directly accessed by an outside door.

While an incredibly taxing job, the project was hugely rewarding – and the result reflects the care and respect due to our national monuments. 🇦🇺

Refined Flooring

https://instagram.com/refined_flooring?igshid=OGQ5ZDc2ODk2ZA==

Loader Contractors

<https://instagram.com/loadercontractors?igshid=OGQ5ZDc2ODk2ZA==>

The Recycled Timber Company

<https://recycledtimber.net.au/>

Old2New Timber Flooring

<https://instagram.com/old2newtimberflooring?igshid=OGQ5ZDc2ODk2ZA==>

